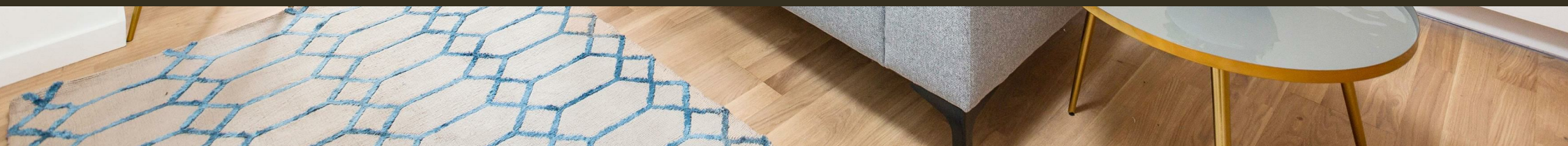




167 Grove Street, London
SE8

GARTONJONES.COM



167 Grove Street, London
, SE8

GARTON JONES.COM

9 Albert
Embankment
London
SE1 7SP

Lettings:
+44 (0) 20 7735 1888
nineelms@gartonjones.com
www.gartonjones.com

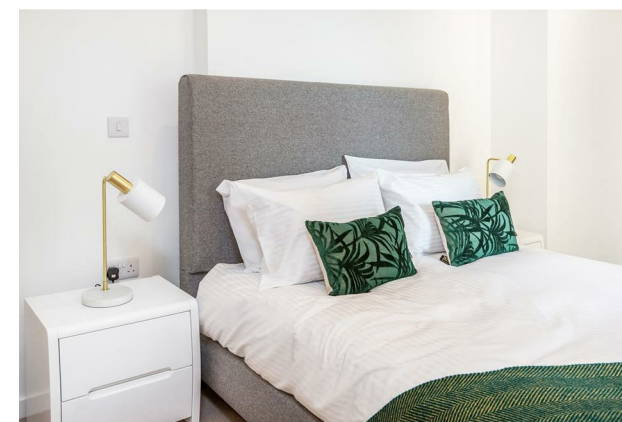
£415 Per Week

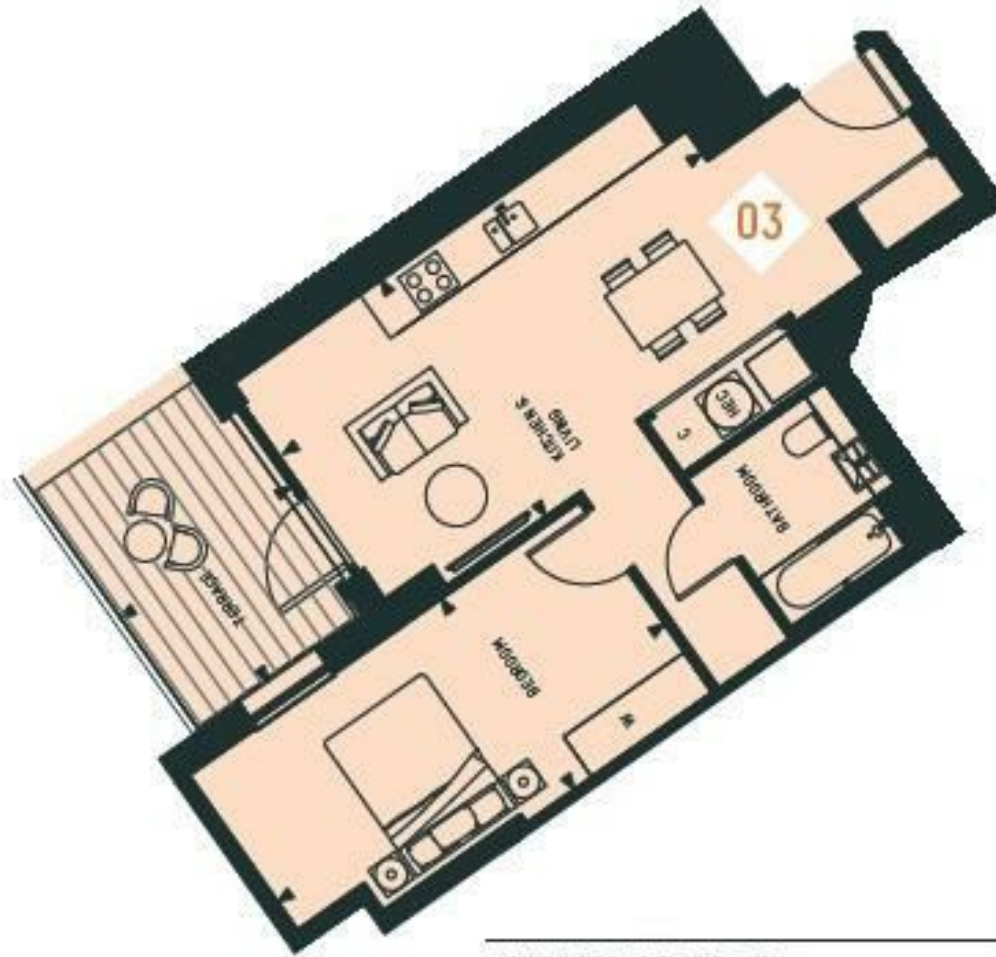
A fantastic 1-bedroom apartment offering 560sq.ft (52sq.m) in Meranti Apartments, Deptford Landings SE8. Comprising a large, open-plan living space with floor-to-ceiling windows that open onto a private terrace overlooking the communal gardens, a stylish contemporary bathroom, and a spacious bedroom with fitted wardrobes. Residents of Deptford Landings benefit from underfloor heating and security from CCTV monitored entry and exit points. The facilities include ground floor secure cycle storage and landscaped communal gardens. Situated directly opposite Pepys Park and located just 0.7 miles from Deptford Rail Station and Surrey Quays Station which are serviced by Thameslink and South Eastern lines and Overground lines respectively. South Bermondsey is a little over a mile away for all Southern Line services providing easy access to the whole of central London.

Please note furniture may differ to that shown in the current photos.

- Electricity Supply — Mains | Water Supply — Mains | Sewerage — Mains | Heating — Underfloor Heating
- Broadband & Mobile Signal : Check Coverage via Ofcom
- No parking
- Lift Access
- Building Safety: EWS1 Available on Request
- Council Tax Band C (London Borough of Lewisham)
- 5 Week Security Deposit
- Holding deposit equivalent to 1 week of rent
- Rent to be payable monthly in advance
- EPC Rating B (85)

- 1 Bedroom
- 560sq.ft (52sq.m)
- Bathroom
- Open Plan Reception Room
- Smart Integrated Kitchen
- Views of Communal Gardens
- Large Terrace
- 1st Floor
- Generous Built-in Storage
- Cycle Storage





INTERNAL AREA	52.1 SQ M	560.8 SQ FT
LIVING/KITCHEN/DINING	3.5 X 6.3M	11'5" X 20'7"
BEDROOM	2.8 X 5.8M	9'2" X 19'0"
TERRACE	19.3 SQ M	207.7 SQ FT

